



ecoscape

science+design

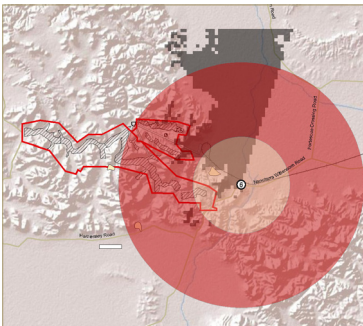
visual impact assessment



Our Services

The visual impact of a project may be determined by examining the:

- visual landscape character of the study area
- extent of the visibility using seen area analysis in Geographic Information Systems (GIS)
- key views and scenic quality
- public sensitivity level
- degree of visual intrusion or obstruction using 3D modelling techniques
- impact on landscape character and quality of views
- visual landscape management zones to prioritise management actions to mitigate visual impact.

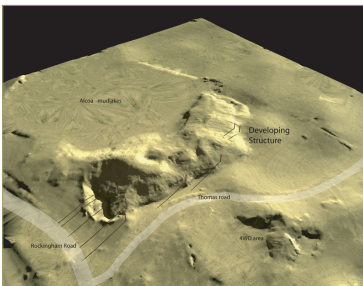


Our Approach

Ecoscape has extensive experience in the preparation of visual landscape planning and impact assessments within the metropolitan area and throughout regional areas of Western Australia. We have worked closely with private enterprise, government and community organisations in the preparation of assessments. Ecoscape has an extensive track record in visual landscape planning and impact assessment and is often called upon as an expert witness by the State Administrative Tribunal (SAT).

As part of the visual impact assessment process we may review previous stakeholder consultation and undertake follow-up consultation with key stakeholders. The assessment process occurs in three stages:

- Landscape Assessment to identify and evaluate the existing landscape and visual elements
- Visual Impact Assessment to identify the likely visual impacts on the landscape
- Visual Impact Management to determine visual impact management recommendations.



Our technical skills include visual impact mapping using GIS, visual modelling, montage imagery, 3D fly-through and cross section analysis.

Our Experience

- Solomon VIA, Fortescue Metals Group Limited
- VIAs for Western Power transmission line and substation infrastructure
- VIA wind farm site Nilgen, Pacific Hydro
- VIA Roe Highway Stage 7, Roe 7 Alliance
- VIA for South West Metropolitan Railway, Perth Urban Rail Development
- Waste Stream Management, Kwinana Tipsite
- VIA Gracetown Redevelopment, LandCorp
- Dongara to Cape Burney Visual Landscape Evaluation, Department of Planning

