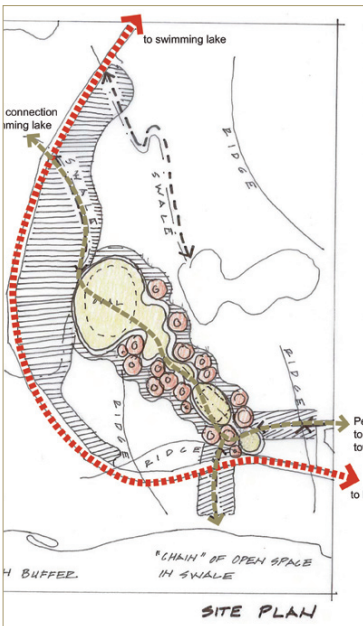
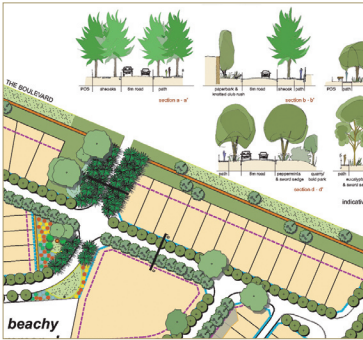




ecoscape

urban design



Traditionally, urban design has been concerned with densification of building, transportation infrastructure, and revenue-producing development, while the landscape in the form of public open space, streetscapes, esplanades and reserves is seen as the salve and respite from the impacts of this urbanism, namely pollution, congestion, and social stress. The de-industrialisation of cities and global ecological awareness has brought about a social, cultural and economic shift in attitudes toward urban design. The formal designs of the traditional city are giving way to a more dynamic urbanism with concerns for the systems that affect the distribution and density of urban form. Landscape is the medium capable of articulating relations between urban infrastructure, public events, and evolving urban programs, rather than simply a healthful exception to the unhealthy city that surrounded them.

Our Services

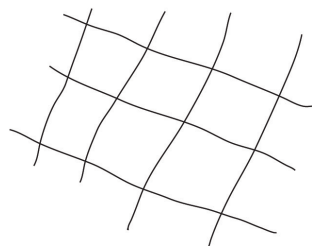
- region, city, neighbourhood and site analysis
- community and stakeholder values consultation
- identification of opportunities and constraints
- collaboration with planners, artists, architects and engineers
- selection of regenerative materials
- integration of urban systems with ecological systems
- artful expression of natural and cultural processes
- detailed design and construction documentation
- opinions of probable cost.

Our Approach

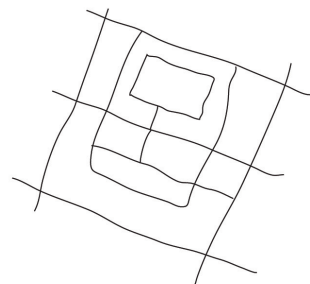
The landscape architects, spatial planners and environmental scientists at Ecoscape provide our clients with the synthesis of knowledge to design the relationships between the dynamic environmental processes and urban form to construct a meaningful and viable public realm.

Our Experience

- West Road Busselton Retail Precinct, Erceg Management
- Faulkner Park Future Options, City of Belmont
- Collie CBD Redevelopment Plan, Shire of Collie
- Knutsford Redevelopment, LandCorp
- Queen Victoria Street Upgrade, City of Fremantle
- Brookdale Wungong Water Project, Stockland



urban grid
 no boundary
 predictable
 flexible
 outwardly focused



garden suburb
 bounded
 circumstantial
 prescribed
 inwardly focused